

Nintendo Switch Wheel Attachment

CONTENTS:

- 1 x Wheel
- 1 x Folding Base
- 2 x Screws
- 1 x Allen Key



'TILT CONTROL' - Driving games (Including Mario Kart).

Please ensure that 'Tilt Controls' are selected in the game menu, as the steering wheel uses the Joy-Con tilt functionality to steer.

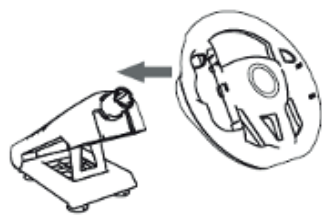
Use the accelerate and brake buttons as normal on the Joy-Con controllers

ASSEMBLY GUIDE:

The unit is supplied in two pieces and is supplied with screws and tool for assembly. See below for simple setup:



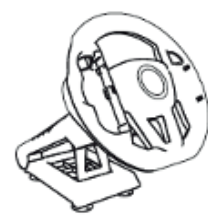
Base unit.



Connect the wheel attachment to the base unit.



Secure the screws provided as shown with the included tool, do not overtighten.



Use the suction cups to stick the steering wheel to a table or desk. Insert your Joy-Con controllers and you're good to go!

CONTENU:

- 1x Volant
- 1x Base pliante
- 2x Vis
- 1x Clé Allen



‘COMMANDE PAR INCLINAISON’ - Jeux de course (notamment Mario Kart).
Veuillez vous assurer que les ‘Commandes par inclinaison’ sont bien activées dans le menu du jeu, puisque le volant utilise la fonctionnalité d’inclinaison du Joy-Con pour fonctionner.

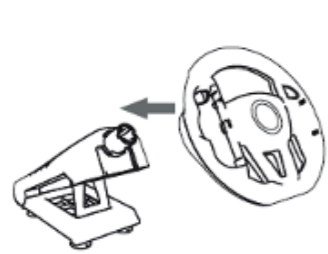
Utilisez les boutons habituels d’accélération et de freinage sur les manettes Joy-Con.

GUIDE D’ASSEMBLAGE :

L’unité est fournie en 2 parties, avec des vis et des outils pour l’assemblage. Consultez les instructions ci-dessous pour une installation simple:



Socle



Placer le volant sur le socle.



Fixer les vis fournies à l’aide de l’outil inclus, comme indiqué sur l’image (ne pas trop serrer).



Utiliser les ventouses pour fixer le volant à une table ou à un bureau, puis insérer vos manettes Joy-Con. Vous pouvez jouer!

INHALT:

- 1 x Lenkrad
- 1 x Klappbarer Ständer
- 2 x Schrauben
- 1 x Inbusschlüssel



„BEWEGUNGSSTEUERUNG“ - Rennspiele (einschließlich Mario Kart).
Bitte vergewissern Sie sich, dass „Bewegungssteuerung“ im Spielmenü ausgewählt ist, da das Lenkrad die Joy-Con-Bewegungssteuerung zum Steuern nutzt.

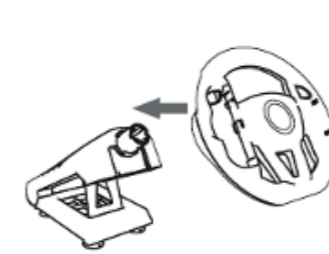
Die Tasten zum Beschleunigen und Bremsen werden ganz normal bei den Joy-Con-Controllern verwendet.

ANLEITUNG ZUM ZUSAMMENBAU:

Das Produkt wird mit 2 Komponenten sowie Schrauben und Werkzeug zum Zusammenbau geliefert. Nachfolgend ist ein einfacher Aufbau abgebildet:



Basisgerät



Stecken Sie das Lenkrad an das Basisgerät an



Befestigen Sie die mitgelieferten Schrauben wie abgebildet mit dem beigefügten Werkzeug, aber nicht zu fest



Nutzen Sie die Saugnäpfe, um das Lenkrad an einem Tisch zu befestigen, schließen Sie Ihre Joy-Con-Controller an und legen Sie dann los!

CONTENUTI:

- 1x Volante
- 1x Base pieghevole
- 2x Viti
- 1x Chiave a brugola



“TILT CONTROL” - Giochi di corsa (incluso Mario Kart).

Assicurarsi che sia selezionato nel menu di gioco “Tilt control”, siccome lo sterzo usa la funzionalità tilt dei Joy-Con per sterzare.

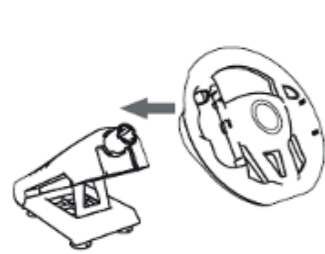
Usa l’acceleratore e i pulsanti dei freni come di consueto sui controller Joy-Con.

GUIDA D’ASSEMBLAGGIO:

L’unità è fornita di 2 pezzi e accessoriata di viti e strumenti per l’assemblaggio. Qui sotto un esempio di configurazione:



Unità base



Connettere il Volante all’unità Base



Assicurare le viti fornite come illustrato con gli strumenti inclusi. Non stringere eccessivamente.



Usare le ventose per attaccare il Volante a un tavolo o a un ripiano, inserire i controller Joy-Con e siete pronti a partire!

CONTENIDO:

- 1x Volante
- 1x Base plegable
- 2x Tornillos
- 1x llave Allen



“CONTROL DE INCLINACIÓN” - Juegos de conducción (incluido Mario Kart).

Asegúrate de tener seleccionados los “controles de inclinación” en el menú del juego, ya que el volante utiliza la función de inclinación del Joy-Con para los virajes.

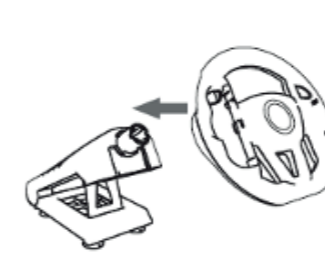
Usa los botones Acelerar y Frenar de forma normal en los mandos Joy-Con.

GUIA DE MONTAJE:

La unidad se suministra en 2 piezas y viene con tornillos y una herramienta para el montaje. A continuación, mostramos la configuración sencilla:



Unidad base



Conecta el accesorio del volante a la unidad base.



Pon los tornillos suministrados como se muestra, con ayuda de la herramienta incluida; no aprietes demasiado.



Usa las ventosas para fijar el volante a una mesa o escritorio; inserta tus mandos Joy-Con y listos.

CONTÉM:

- 1 x Volante
- 1 x Base retrátil
- 2 x Parafusos
- 1 x Chave Allen

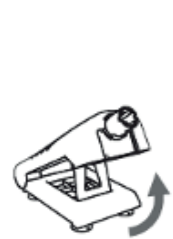


“CONTROLO DE INCLINAÇÃO” - Jogos de condução (incluindo Mario Kart).
Certifique-se de que os “Controlos de Inclinação” estão seleccionados no menu do jogo, já que o volante utiliza a funcionalidade do Joy-Con para mover a direção.

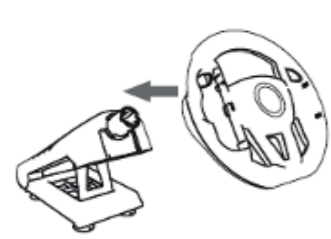
Utilize os botões para acelerar e travar normais nos comandos Joy-Con.

GUIA DE MONTAGEM:

A unidade é fornecida em 2 peças, juntamente com os parafusos e a ferramenta de montagem. Ver abaixo a configuração simples:



Unidade da Base



Encaixe o fixador do Volante na unidade da Base



Aperte os parafusos fornecidos conforme ilustrado, utilizando a ferramenta incluída, sem apertar demais



Utilize as ventosas para fixar o Volante a uma mesa ou secretária, introduza os comandos Joy-Con e comece a jogar.

AUSTRALIAN & NEW ZEALAND WARRANTY

These goods come with guarantees that cannot be excluded under the Australian Consumer Law and New Zealand Consumer Guarantees Act. You are entitled to a replacement or refund for a major failure and compensation for any other reasonably foreseeable loss or damage. You are also entitled to have the goods repaired or replaced if the goods fail to be of acceptable quality and the failure does not amount of a major failure.

If purchased in Australia or New Zealand, this product comes with a one year (12 months) warranty from the date of purchase. Defects in the product must have appeared within one year from date of purchase, in order to claim warranty. All warranty claims must be facilitated back through the retailer of purchase in accordance with the retailers returns policy and procedures. Any expense incurred as a result of returning the product to the retailer of purchase are the full responsibility of the customer.

NEW ZEALAND

FIVEIGHT Distribution Ltd

Unit B, 39 Westpoint Drive

Hobsonville

Auckland 0618, New Zealand

Phone: (64) 9 479 1530

Email: info@fiveight.co.nz

Visit: <http://www.fiveight.co.nz>

AUSTRALIA

Numskull Group

U 14 2A Church St

Drummoyne

NSW 2047, Australia

Phone: +44(0) 1707502880

Email: hello@numskull.com

Visit: www.numskull.com